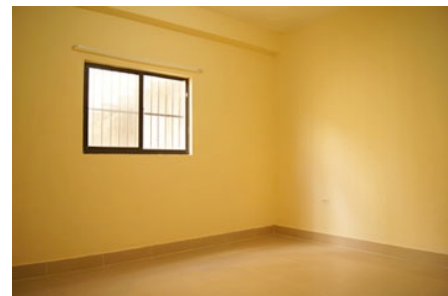


2 Bed / 1 Bath Apartment in Palm Grove Estate

RENTAL



2 Bedroom / 1 Bath Apartment on Ground Floor in Palm Grove Estate

Palm Grove Estate, Mile 5 Philip Goldson Highway, Belize City, Belize

This newly built Apartment is found on mile 5 on the Philip Goldson Highway (Northern Highway) in Palm Grove Estate - the only gated community in Belize City, right across from Driftwood Bay and just South of the Haulover Bridge.

Apartment offers 2 Bedrooms and 1 Bathroom, open Living Room, Dining Room, and Kitchen. The Apartment is Fully Tiled with Light Fixtures in the Dining and Living Room. Apartment also offers a tiled, private Patio to the future tenant.

Palm Grove Estate is in close proximity to Horizon Academy Elementary School, Scotia Bank and Brodie's Supermarket and Department Store.

Being Offered at:
\$325 USD / \$650 BZD per month



Proud Member of:
AREBB - Association of Real Estate
Brokers of Belize

Property Highlights

- Recently Built Apartment
- 2 Bedroom / 1 Bath
- 810 sq. ft.
- Fully Tiled
- Private, Tiled Patio
- Close Proximity to Horizon Academy Elementary School, Scotia Bank & Brodie's Supermarket and Department Store

Listing Agent: Hugo Moguel

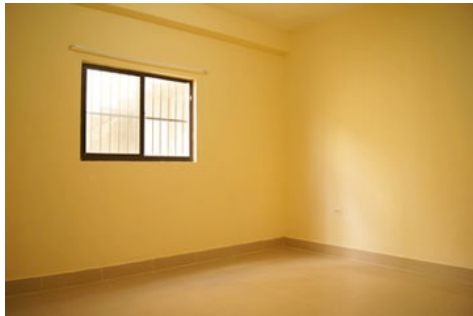
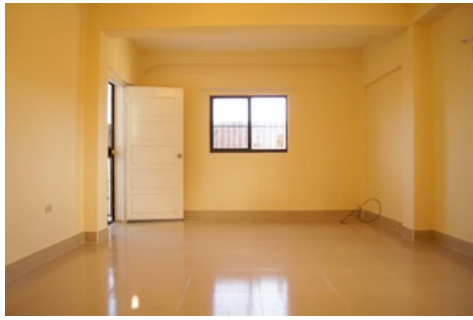
Contact Info: Office: 501-223-2427

Mobile: 501-610-1404

Fax: 501-223-2228

email: info@vistabelize.com

www.vistabelize.com



Listing Agent: Hugo Moguel
Contact Info: Office: 501-223-2427
 Mobile: 501-610-1404
 Fax: 501-223-2228
email: info@vistabelize.com
www.vistabelize.com