



35.8 Acres of Agricultural Land West of Orange Walk Town - Orange Walk District

Yo Creek Village, Orange Walk District, Belize

Just off the newly paved Yo Creek Road in the Orange Walk District lies this 35.8 Acre Property comprising of prime farm land. Property is located East of Yo Creek Village and 4 1/2 miles West of Orange Walk Town.

Property is accessed by an all-weather road just off the Yo Creek Road and offers fertile land ideal for farming with 826 ft. (251.76 m) of Road Frontage. In the past, the land was once used as a pasture and also for sugar cane production with several large sugar cane fields still bordering the Property.

Property is in an ideal farming / agricultural location near Yo Creek Village and just 7 1/2 miles from the Belize Sugar Industry with easy access to and from Orange Walk Town. It is in close proximity to farms, pastures and sugar cane fields.

Being Offered at:
\$27,000 USD / \$54,000 BZD

Property Highlights

- 35.8 Acres of Farm / Pasture Land near Yo Creek Village - Orange Walk
- 4 1/2 Miles West of Orange Walk Town
- Fertile Land
- 826 ft. of Road Frontage
- All-Weather Road
- Just off the Newly Paved Yo Creek Road
- Ideal Farming / Agricultural Location
- 7 1/2 Miles from the Belize Sugar Industry
- Surrounded by Pastures, Farms & Sugar Cane Fields.



Proud Member of:
AREBB - Association of Real Estate
Brokers of Belize

Listing Agent: Hugo Moguel

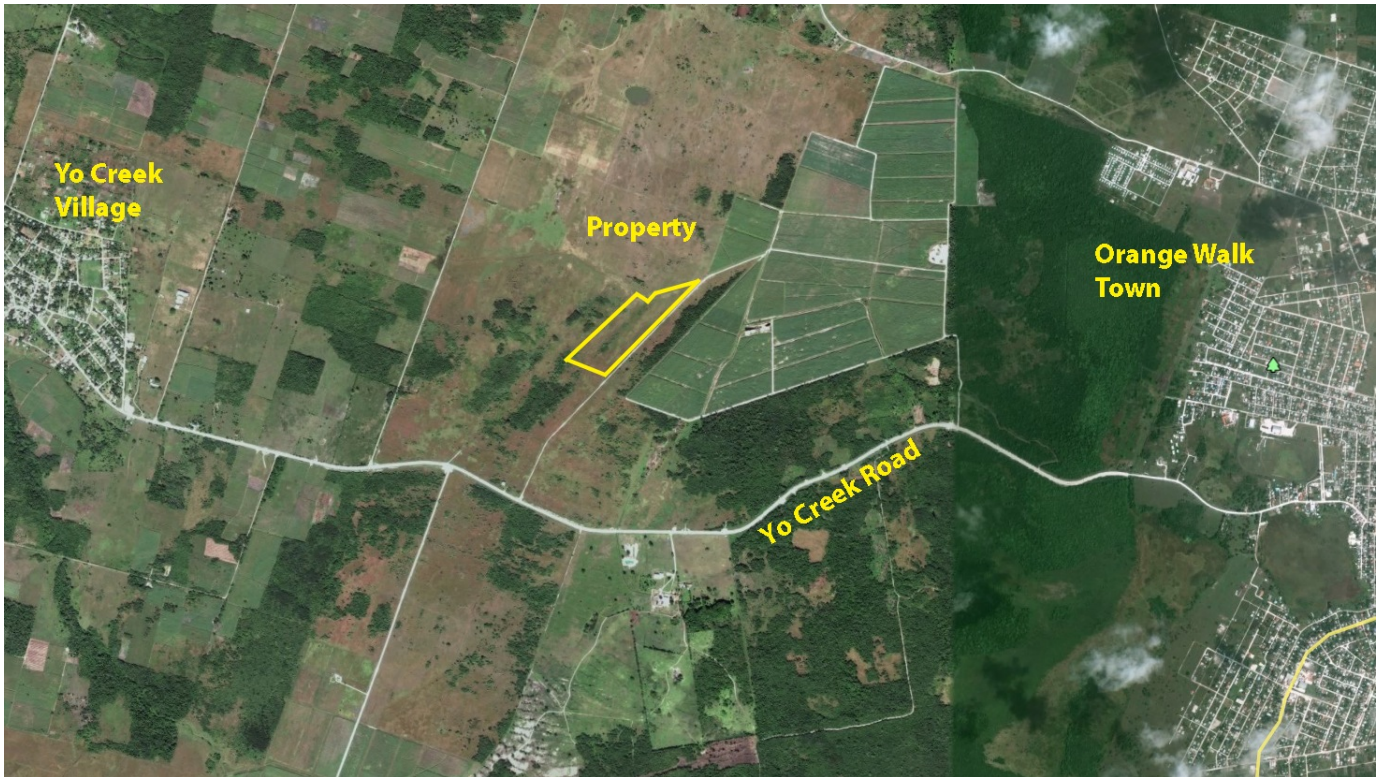
Contact Info: Office: 501-223-2427

Mobile: 501-610-1404

Fax: 501-223-2228

email: info@vistabelize.com

www.vistabelize.com



Listing Agent: Hugo Moguel

Contact Info: Office: 501-223-2427

Mobile: 501-610-1404

Fax: 501-223-2228

email: info@vistabelize.com

www.vistabelize.com