

5 Acre Farm / Agricultural Land - Cayo

LAND



5 Acre Farm / Agricultural Land along the Eastern Fringes of Frank's Eddy Village Frank's Eddy Village, Cayo District, Belize

Located South of the George Price Highway (Western Highway) in the Cayo District along the Eastern fringes of Frank's Eddy Village lies this 5 Acre Farm / Agricultural Property. Property is in a terrific location at the edge of a growing village and just 1 3/4 miles from the George Price Highway (Western Highway).

Property is Cleared and accessed by a side road just off the main road that passes through Franks Eddy Village. It has a dimension of 480 ft. (146.34m) x 470 ft. (143.19m) offering 480 ft. (146.34m) of Road Frontage.

Property is just North of and along the Road to Jaguar Paw - A Major Tourist Destination in Belize's mainland. Property also holds potential for a Commercial Development 25 minutes from Belmopan and 45 minutes from Belize City.

** Being offered at an unbelievably low price - motivated seller

Being Offered at:
\$25,000 USD / \$50,000 BZD

Property Highlights

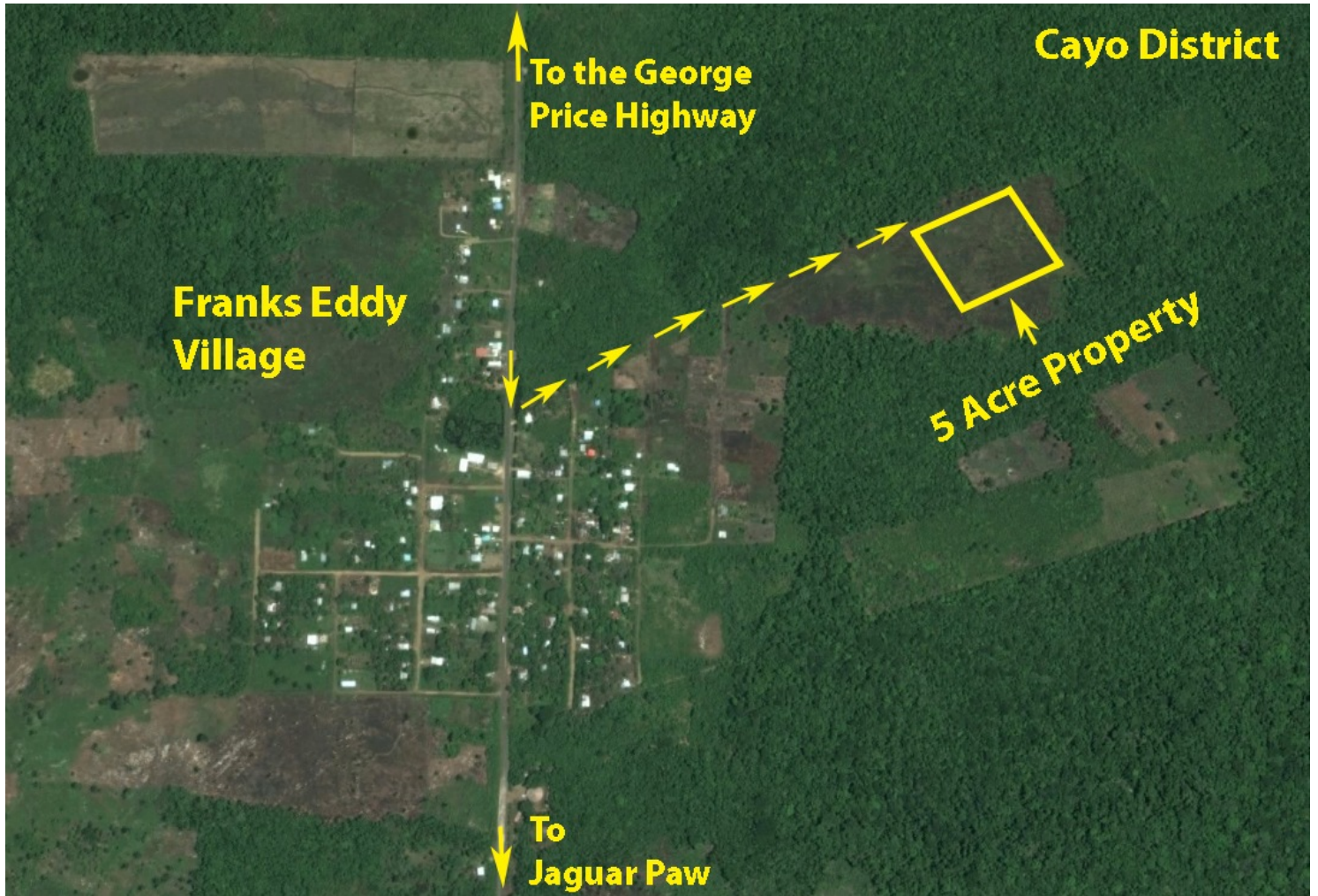
- 5 Acres; 480 ft. x 470 ft.
- Located on the Eastern Fringes of Frank's Eddy Village
- Cleared
- 480 ft. of Road Frontage
- Ideal Farm / Agricultural Land
- North of Jaguar Paw; South of the George Price Highway
- Accessible Road from and to Frank's Eddy Village
- 1/3 of a Mile from the Main Frank's Eddy / Jaguar Paw Road



Proud Member of:
AREBB - Association of Real Estate
Brokers of Belize



Listing Agent: Hugo Moguel
Contact Info: Office: 501-223-2427
 Mobile: 501-610-1404
 Fax: 501-223-2228
email: info@vistabelize.com
www.vistabelize.com



Listing Agent: Hugo Moguel
Contact Info: Office: 501-223-2427
Mobile: 501-610-1404
Fax: 501-223-2228
email: info@vistabelize.com
www.vistabelize.com